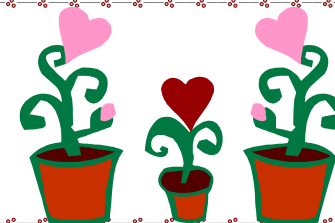






Happy Valentines Day!

Mannington Township School Student Menu FEBRUARY 2012



Mon	Tue	Wed	Thu	Fri
		1 Hot Dog on a bun Baked Beans Peaches Milk	2 Nachos w/ chips & toppings Steamed Corn Pears Milk	3 Cheesy Pizza Garden Salad w/ Dressing Apples Milk
6 BBQ Ribbie on a bun Steamed Carrots Fruit Cocktail Milk	7 Hamburger on a bun Green Beans Mandarin Oranges Milk	8 Chicken Nuggets w/roll Steamed Corn Pears Milk	9 Whole Grain Pasta w/meat Sauce & roll Carrot Coins Applesauce Milk	10 Pepperoni Pizza Garden Salad w/ Dressing Peaches Milk
13 Chicken Tenders w/roll Tator Tots Pineapple Milk	14 Turkey w/stuffing Mashed Potatoes Green Beans Apples Milk	15 Cheese steak on a roll Broccoli Mixed Fruit Milk	16 Meatball Hoagie Golden Corn Peaches Milk	17 School Closed 
20 School Closed 	21 Beef-a-Roni w/roll Steamed Corn Mixed Fruit Milk	22 French Toast w/sausage Mixed Vegetables Pineapple Milk	23 Hot Dog on a bun Baked Beans Applesauce Milk	24 Pepperoni Pizza Garden Salad w/dressing Peaches Milk
27 Chicken Nuggets Broccoli Assorted Fruits Milk	28 Pasta w/meat sauce & roll Steamed Carrots Applesauce Milk	29 Hot Ham & Cheese on a bun Steamed Green Beans Peaches Milk		

Reminders:

2/3/12.....Report Cards Issued
2/4/12.....Crop for the Arts-8:00am
2/6/12.....T.E.A.M. Mtg.— 6:30 pm
2/14/12.....BOE Mtg.—7:00pm
2/17-2/20/12.....Presidents Weekend-
School Closed

Breakfast (offered daily)
Assorted Cereals, Fruit, Yogurt, Juice & Milk

Choices may also include:

Waffles, French Toast, Egg, Cheese, Bacon (or) Sausage on Kaiser Roll

Lunch #2 (offered daily)
Peanut Butter & Jelly Sandwich

Lunch #3 (offered daily)
Bologna & Cheese Sandwich

Lunch 5 (offered daily)
Pizza

All lunches include 1 vegetable & 2 fruits

Milk: 1% white or low fat chocolate

Prices:

Breakfast: \$1.35 regular
.30 reduced
Lunch \$2.40 regular
.40 reduced

Milk Only: .50
Bottled Water: .50
Snapple: .75

Ice Cream

PK-3 (Mon. & Fri.) .50
4-8 (daily) .25-\$1.00

Snacks

(Wed.) .50
(daily) .25-\$1.00